



# i-traks™ Mobile

## Installation and Instructions



Introduction.....	3
Installing .....	4
For PCs that have Microsoft ActiveSync.....	4
Starting i-traks Mobile.....	13
Running i-traks Mobile .....	14
Controlling the behaviour of i-traks Mobile.....	19
i-traks Admin .....	20
Other i-traks Mobile settings .....	21
i-traks Service: Tracking in the background .....	22
Make tracking starts automatically when the phone is turned on ...	23
Getting the most from i-traks Mobile and i-traks Service .....	25

## Introduction

This software is designed to work with a PDA or mobile phone running Windows Mobile 5 or higher and either an integrated GPS device or a Bluetooth connected GPS device. You will also need a PC running Windows 7, Windows Vista or Windows XP SP2 or above, to view your PDA on i-traks Console.

### Tech notes

- Each i-traks Mobile account is associated with a unique port on our server. The account we give you to login allows you to see your unit.
- When using i-traks Mobile it is a good idea to disable the PDA power saving characteristics, as this can make the application disconnect from the server and/or lose GPS functionality.

Deleted: only

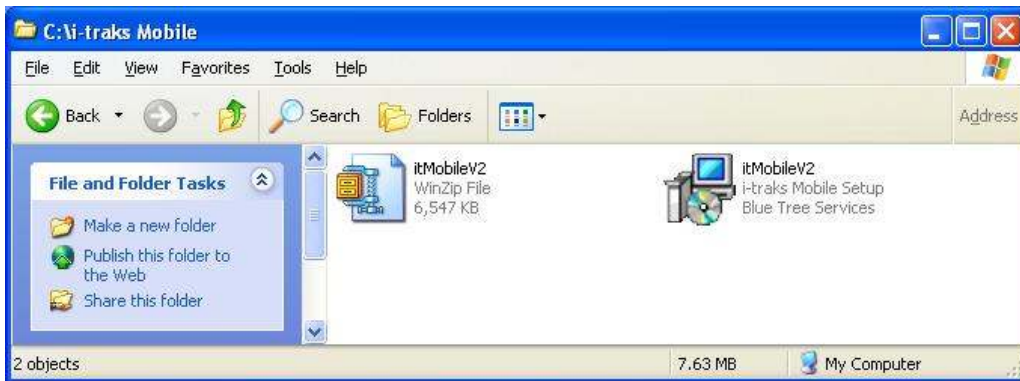
## Installing

Windows XP: Ensure you have Microsoft ActiveSync V4.5. You can run the .exe form of the application on the PC and it will be installed via ActiveSync as above.

Windows 7, Vista or XP: You can copy the cab file to the PDA, and run it on the PDA to install the application to the PDA.

### For PCs that have Microsoft ActiveSync

After downloading i-traks mobile application you will have a zip file after extracting the zip file there will be two files as shown below.

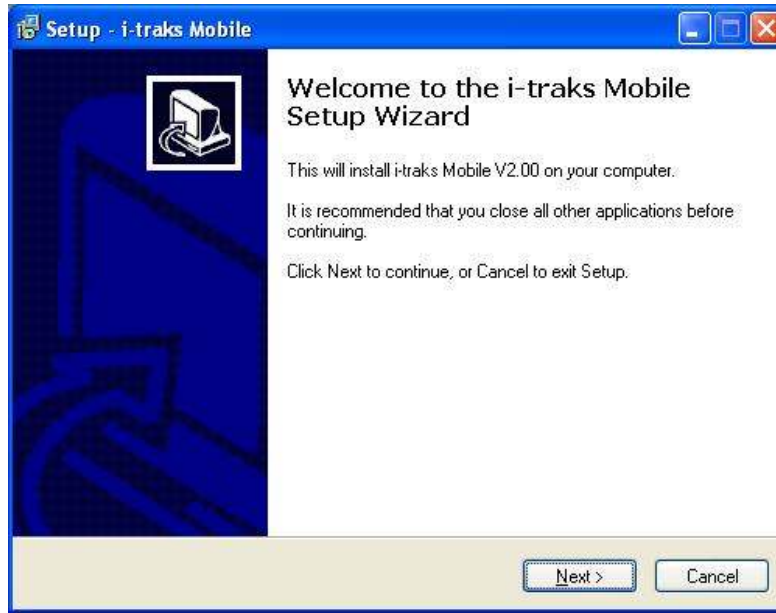


Double click on the setup program and the following screen appears:

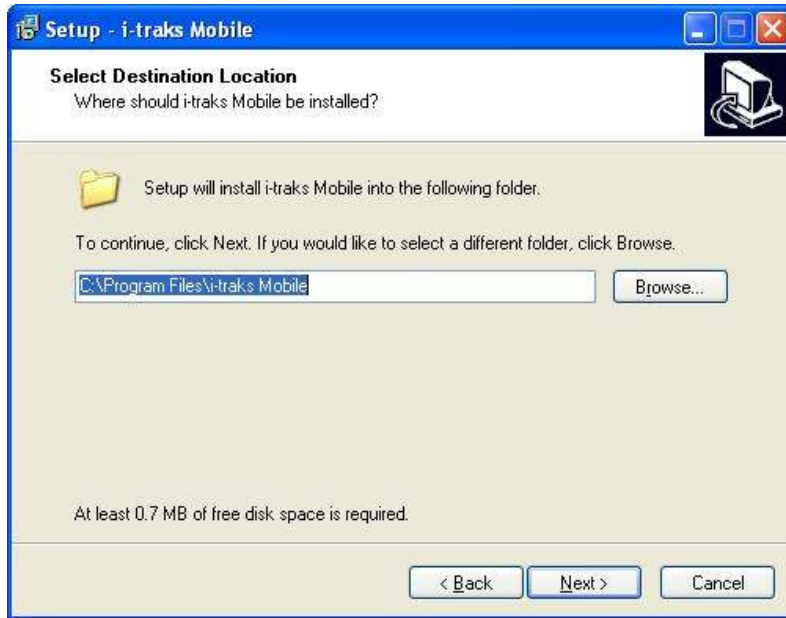
#### Tech notes

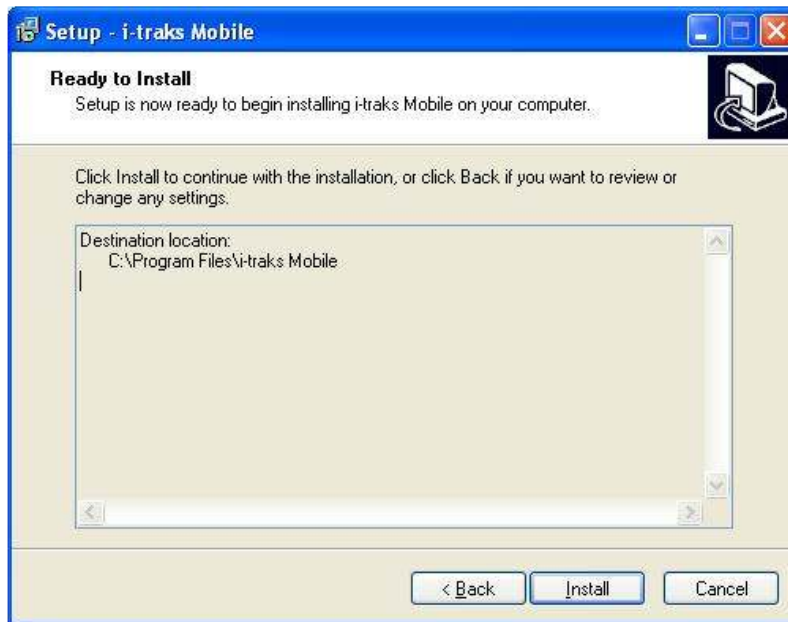
- Microsoft ActiveSync™ is the synchronization software that is used by Microsoft Windows™ to facilitate communications between the PDA and PC. It should come with the PDA upon purchase and when not, it should be available as a download from Microsoft.

Deleted: which



Follow the instructions pressing appropriate buttons each time until you reach the last screen:



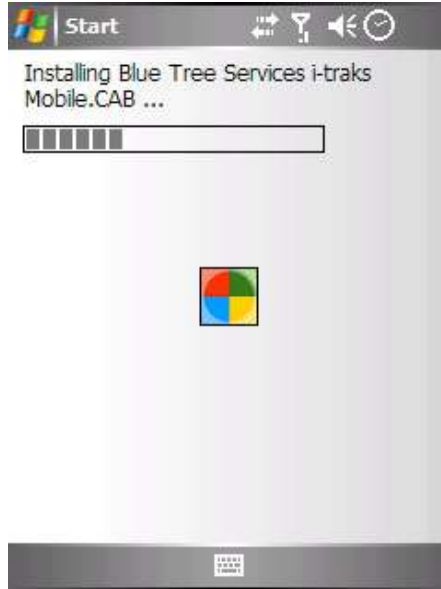




Please ensure that your PDA is connected to the PC and that Microsoft ActiveSync is running. The PC then attempts to install the application onto the connected device.

|  **Deleted:** The following dialog box should appear:¶

On the PDA a screen similar to the following should appear. Please press "Yes".



When this is successfully completed the following screen will appear on the PDA.



The application should appear under Programs



**Programs**

Forge Cottage,  
High Banks,  
Loose Village,  
Maidstone Kent,  
ME15 0EG

Tel UK: 0800 1120 365  
Int'l: +44 208 253 7026



[www.bluetreeservices.co.uk](http://www.bluetreeservices.co.uk)

## Starting i-traks Mobile

Deleted: Starting i-traks  
MOBILE

To start select the application

After installing i-traks Mobile, when you run it you may be presented with an error message which states that it requires the .NET compact framework V2.0

If this happens you need to obtain and install that package. To obtain it please click on the following:

<http://www.microsoft.com/downloads/details.aspx?familyid=AEA55F2-07B5-4A8C-8A44-B4E1B196D5C0&displaylang=en#Requirements>

When the page has come up,

1. Press the "Download" button,
2. Connect up the PDA to the PC via ActiveSync
3. Run the file which you have downloaded

## Running i-traks Mobile

The following screen will appear at start up



**Startup Screen**

When first starting the application no login details are available, so you need to press the Stop button.

Then press Start and enter the details sent to you by Blue Tree Services.



## Tech notes

- i-traks Mobile will search for available GPS devices. If there is a GPS device available to your PDA (built in or connected via Bluetooth) this will be selected as soon as the application can find it.
- If it is not possible for the application to connect it will keep trying until it succeeds.
- If i-traks Mobile becomes disconnected from the server it will continuously attempt to reconnect.

When you are logged in the main screen will look like this:



**Figure: Main Screen**



**Figure: Main screen when i-traks mobile is stopped**



**Figure: Main Screen upon "Show Live Status"**

The red and green boxes are as follows:

CON: This is green when the application is successfully sending data to the Blue Tree Server. Red when the application is not sending data.

GPS: This is green when the application has detected a GPS device on the PDA and can determine the location using that device. It is red when unable to detect the GPS device or get a fix.

ALT: Red when the Alert button has been pressed,

To send an alert press the Alert button.



#### Tech notes

- [It is possible to configure the console such that alert messages may be sent via SMS and/or Email \(Please see the console manual for details\).](#)
- Remember that to send SMS alerts you will need to ensure you have enough credits (see [www.BlueTreeServices.co.uk](http://www.BlueTreeServices.co.uk))
- SMS alerts are only sent once every 10 minutes to save your credits

#### **When the application is not sending a GPS fix to the Blue Tree Server**

When a PDA has an inbuilt GPS device, the application should find this device automatically.

To correctly identify the current position the PDA should ideally be outside.

If your device cannot get a GPS fix please contact Blue Tree Services and we will attempt to rectify that situation.

## Controlling the behavior of i-traks Mobile

The default operation of i-traks Mobile is to

1. Be visible to the user
2. Send data every 10 seconds.
3. Send data when the device receives an SMS or phone call.
4. Allow the user to start and stop the sending of data.

**Deleted:** Start

**Deleted:** wakes up from sleep

i-traks Mobile may be configured to behave differently from these default modes.

This is described in the following sections.

## ***i-traks Admin***

This controls the following aspects of the application's operations.

1. Enable/Disable Stop: When disabled the stop and exit buttons are no longer accessible. It is only possible to terminate the application by turning off the PDA, or via a task manager type application.

**Deleted:** The application can only be terminated

2. Apply GPS Correction: A small number of WM5 and WM6 PDAs have an error whereby the GPS coordinates are incorrect, and must be corrected.

Such coordinates usually appear very far away (sometimes thousands of kilometres) from the location of the PDA.

option ensures that the application corrects them before sending them to the server.

**Deleted:** This

## Other i-traks Mobile settings

### Allowed Tracking Intervals

10 seconds to 5 minutes and then multiples of 5 minutes. Within a tracking session it is possible to change from below 1 minute to 1 minute or longer, but not possible to change from longer than 1 minute back down to below one minute. The tracking interval is controlled from the PC console application (i-traks Console).

Deleted: i-traks Mobile

To ensure that the application appears in the foreground upon a button press.

Deleted:  
i-traks Mobile  
Select the "i-traks Mobile" application file. Right click and select Create a shortcut.

Start Menu/Settings/Personal/Buttons. Select a key and select i-traks Mobile.

Formatted

### Panic just using a button

First ensure that the application is in the foreground. Then press the Enter button on the PDA.

### Disable the Stop and Exit buttons

Launch i-traks Admin. Ensure that the Enable/Disable Stop" menu item is not checked.

### ***i-traks Service: Tracking in the background***

This is a tracking application that runs in the background and is not visible on the phone while running. It is only possible to terminate this application by turning off the PDA, or via a task manager type application. This application is installed along with i-traks Mobile and is available in the i-traks Mobile application folder on the PDA.

**Deleted:** A

**Deleted:** This application can only be terminated

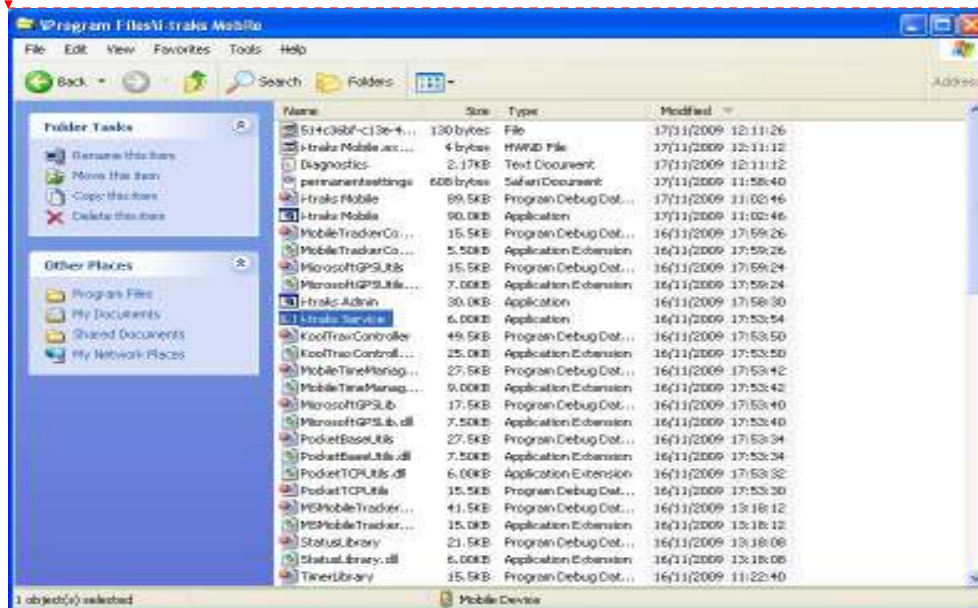
This application is most useful when started automatically upon phone power-on. This is detailed in the following section.

#### ***Allowed Tracking Intervals***

1 minute to 5 minutes and then multiples of 5 minutes

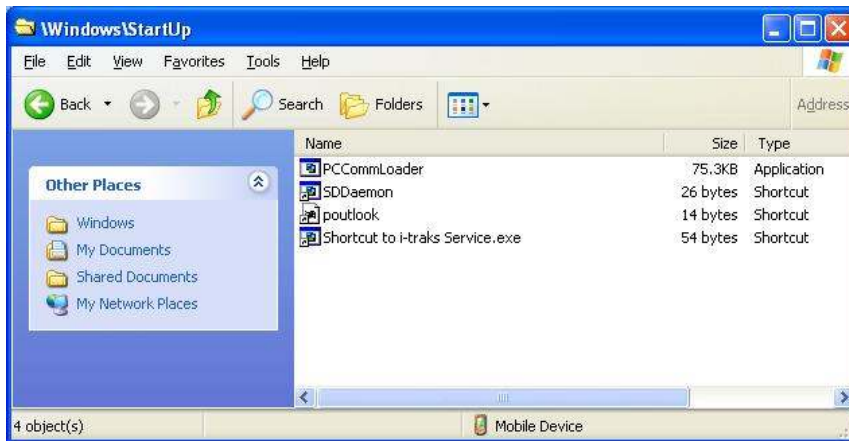
### ***Make tracking starts automatically when the phone is turned on***

1. Select the "i-traks Service" or "i-traks Mobile" application file depending on whether you want the application to be visible to the user or not.
2. Open an explorer window on your PDA using ActiveSync/Explore on your PC.
3. Navigate to the application folder (usually \Program Files\i-traks Mobile).
4. Create a shortcut for the appropriate application (i-traks Mobile or i-traks Service).
5. Copy the shortcut to the \Windows\Startup folder.
6. Right click and select "Create a shortcut".
7. Copy the shortcut to the \Windows\Startup folder on the PDA.



Deleted: ¶  
¶  
¶  
¶  
¶  
¶  
¶  
¶  
Deleted: FOD: See pictures under I-traks Service.¶

**Figure: i-traks Mobile Application folder**



**Figure: Startup Folder (Example)**

## ***Getting the most from i-traks Mobile and i-traks Service***

### Auto Start

Ensure that it is installed in the main memory and not on a storage card.

### Connectivity

1. Ensure your PDA has the right date/time. ~~Ensure that the PDA has access to all ports and not just ports 80 and 443. The required settings can be obtained from your Internet Service Provider.~~
2. The PDA will not necessarily be able to access the web consistently if it is making or receiving calls.
3. Restart the application after using ActiveSync to ensure continued connectivity.
4. The application runs more efficiently when the "Show Live Status" option has not been selected. This option should only be used when the application is not behaving as expected.

**Deleted:** and is set GMT

**Formatted:** Bullets and Numbering